

Get the EPC Advantage

Doing Business Since 1969

Encoder Products Company, Inc. (EPC) is a leading designer and manufacturer of motion sensing devices. Founded in the U.S.A. in 1969, EPC began operations with a small line of custom encoders and has remained a US-based company, with our main manufacturing facility, our 100,000 square foot vertically-integrated location, in Sagle, Idaho, USA.

Quality You Can Rely On

EPC is an ISO 9001.2015 certified company. At EPC, quality is designed into every product and each product is fully tested against EPC's exacting quality standards.

Outstanding Value

Our products are competitively priced and come with an industry leading warranty* – and we routinely hear from customers who are replacing EPC encoders that are decades old.

**For products with a high-operating-temperature option, warranty is two years.*

Exceptional Customer Service

When you call EPC, you talk to engineers and encoder experts who can answer your toughest encoder questions. We're here to answer your calls Monday through Friday, 5:00 am - 4:30 pm PST.

Fast Lead Times

EPC is known for our fast lead times. We can produce your custom encoders faster than most suppliers' standard products, and we even offer same-day expedite service on many models.



encoder.com • 1-800-366-5412 • sales@encoder.com

World Headquarters Americas Division

Encoder Products Company
464276 Highway 95
PO Box 249
Sagle, Idaho 83860
USA

Phone: 1.800.366.5412
1.208.263.8541

Email: sales@encoder.com
Web: encoder.com

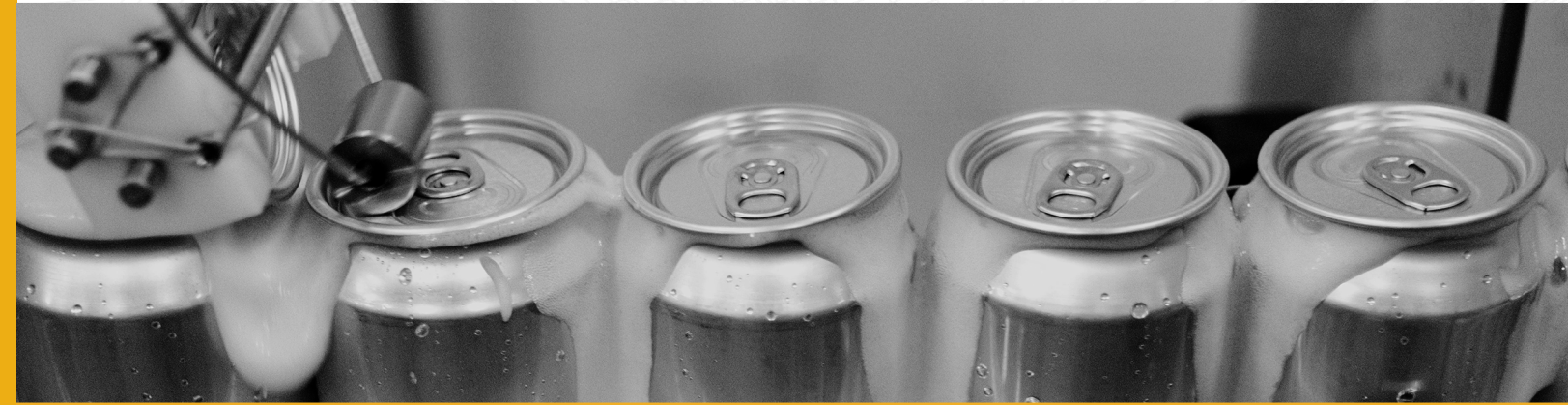


Europe Division

British Encoder Products Company, UK
Email: sales@encoder.co.uk
Web: encoder.co.uk



Packaging, Printing, & Labeling Solutions



Accu-Coder®, Accu-CoderPro®, Tru-Trac®, and Tru-TracPro™ are trademarks of Encoder Products Company.

Your responsive experts in motion control

ENCODER.COM

EPC's North American manufacturing facility and world headquarters in Sagle, Idaho, USA. Est. 1969



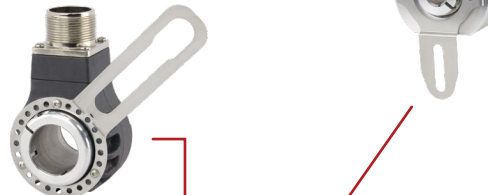
Solutions for Packaging, Printing, & Labeling

Typical examples of select encoder applications



Model 25T/H

- Single replacement solution for 2.0" to 3.5" encoders
- Many flexible, rugged mounting options
- Variety of bore sizes available
- Up to IP66 sealing available
- Resolutions from 1 to 10,000 CPR
- Corrosion-resistant option



Model 260

- 2" diameter, low profile of 1.19"
- Thru-bore and blind hollow bore styles
- Many flexible, rugged mounting options
- Variety of bore sizes available
- Up to IP64 sealing available
- Resolutions from 1 to 10,000 CPR



Model 30MT Magnetic incremental encoder module

- Compact 30 mm (1.18") size
- Up to 1024 CPR (4096 PPR with quadrature counting)
- Sealing to IP69K



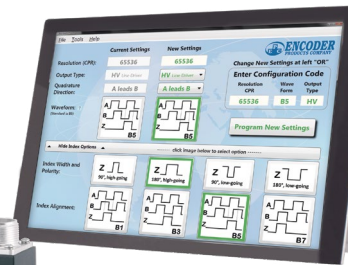
Model 15T

- Size Ø1.5" encoder
- Thru-bore and blind hollow bore
- Bore sizes to 3/8" or 10 mm
- Several flex mount options
- Resolutions from 1 to 10,000 CPR
- Up to IP64 sealing available



Accu-CoderPro® Programmable Incremental Encoders

- Programmable electronics:
 - Resolutions from 1 to 65,536 CPR
 - Output Type: 6 different options
 - Wave Form: Choose from 32 options
- Variety of shaft/bore sizes available
- Many flexible, rugged mounting options
- Up to IP67 sealing available



Multi-Turn Absolute Encoders

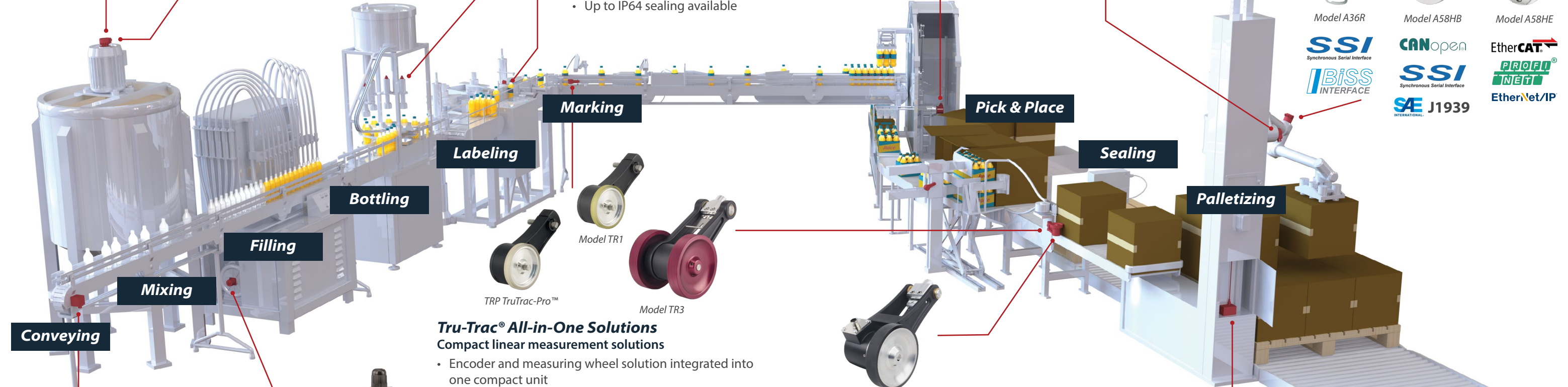
- Resolutions to 22 Bit ST/24 Bit MT (Model A36R)
- Resolutions to 16 Bit ST/43 Bit MT (Model A58H)
- Compact, rugged packages
- Shaft sizes to 0.375" or 15 mm (varies by model)
- Bore sizes to 0.375" or 10 mm
- Sealing to IP64 (Model A36R)
- Sealing to IP67 (Model A58H)
- IP69K Sealing options (Models A36SB & A58SB)



Model A36R

Model A58HB

Model A58HE



Conveying

Mixing

Filling

Bottling

Labeling

Marking

Pick & Place

Sealing

Palletizing



TRP TruTrac-Pro™

Model TR3

Tru-Trac® All-in-One Solutions Compact linear measurement solutions

- Encoder and measuring wheel solution integrated into one compact unit
- Easily installed in a vertical, horizontal, or upside down orientation
- Operates over a variety of surfaces at speeds up to 3,000 feet per minute
- Available with a variety of measuring wheel sizes and materials
- Model TR3 available with single or dual wheels
- Up to IP66 sealing available
- Resolutions from 1 to 10,000 CPR

TRP Tru-TracPro™ Programmable Linear Measurement Encoder

- Resolutions from 1 to 100,000 CPR

Programmable Linear Measurement Solution

- Bracket fits any 2.5" shaft encoder with servo flange or 58 mm with clamping flange, including these EPC models:
 - Model 25SP Accu-CoderPro®
 - Model A58SE with EtherNet/IP™, EtherCAT®, or PROFINET®
 - Model A58SB with CANopen®, SSI, or J1939
 - Model A25SB with CANopen®, SSI, or J1939
- Available with a variety of measuring wheels sizes and materials

The Cube Series

- Single and double shaft options
- Shafts to 5/8"
- Resolutions from 1 to 10,000 CPR
- Versatile housing styles, from standard to ultra-heavy duty



Model 802S

- Corrosion-resistant stainless steel housing
- Industrial Ø2.0" stainless steel encoder
- Shaft sizes to 3/8" or 10 mm
- Flange and servo mounts
- Up to IP67 sealing available
- Resolutions from 1 to 30,000 CPR

Draw Wire Encoder Solutions

- Quick and easy encoder mounting
- Wire lengths from 1 to 42.5 m
- Linearity ± 0.05 % of full range with encoder
- Optional high corrosion protection
- Up to IP67 sealing available

